

Sp2000 Org II Quiz #1 Ch 14-16 (20 questions for 20 points)

NAME: _____

If you object to your graded script being placed in a box outside my office then check here _____

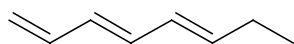
(1-10) are True or False.

- 1) An aromatic compound must contain a ring atom that is not carbon.
- 2) Normal ethers are unreactive to acids.
- 3) Alkynes have more π bonds than allenes.
- 4) Kinetic products are always formed more quickly than thermodynamic products.

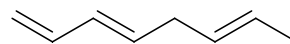
5)



6)



is less stable than

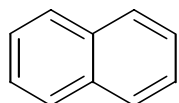


7)



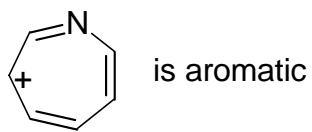
is aromatic

8)

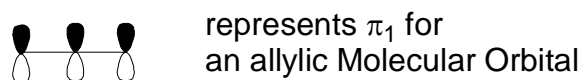


is aromatic

9)

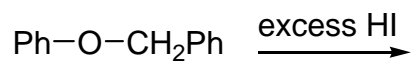


10)

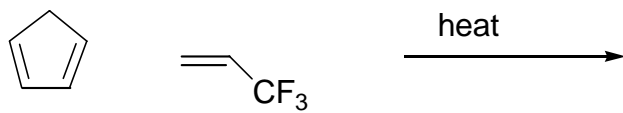


11-15) Give the products for the following reactions (and indicate stereo/regiochemistry where applicable).

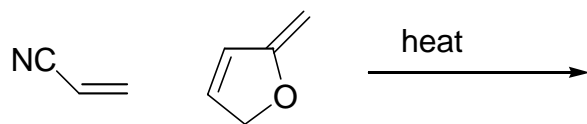
11)



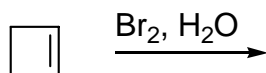
12)



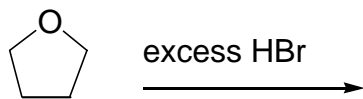
13)



14)

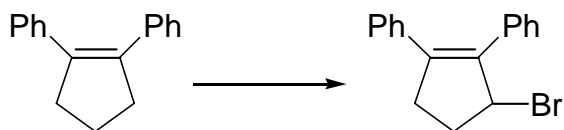


15)

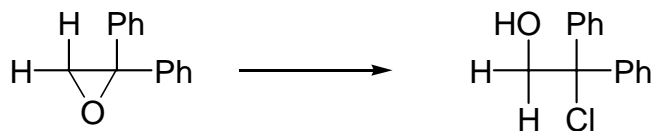


16-20) Give reagents and conditions for the following transformations.

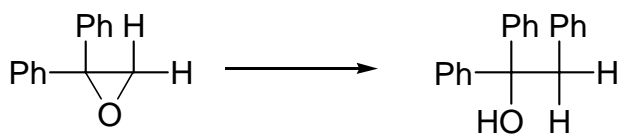
16)



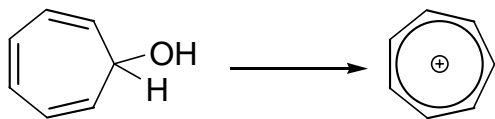
17)



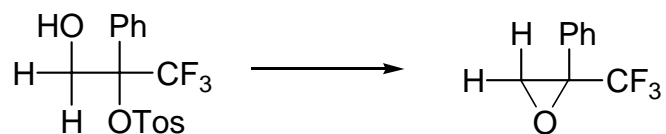
18)



19)



20)



BONUS QUESTION for 1 extra point

Using the polygon rule, demonstrate that the tropylium ion is aromatic.

Sp2000 Org II Quiz #1 Ch 14-16 (20 questions for 20 points)

NAME: ALEX BLAYNE-LAYDER

If you object to your graded script being placed in a box outside my office then check here _____

(1-10) are True or False.



1) An aromatic compound must contain a ring atom that is not carbon. **F**

2) Normal ethers are unreactive to acids. **F**

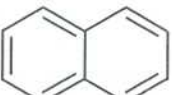
3) Alkynes have more π bonds than allenes. **F**

4) Kinetic products are always formed more quickly than thermodynamic products. **T**

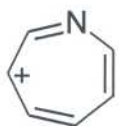
5) $\text{H}_3\text{C}-\text{C}\equiv\text{C}-\text{CH}_3$ is less stable than $\text{H}_2\text{C}=\text{C}=\text{CHCH}_3$ **F**

6)  is less stable than  **F**

7)  is aromatic **T**

8)  is aromatic **T**

9)



is aromatic

T

10)



represents π_1 for
an allylic Molecular Orbital

T

11-15) Give the products for the following reactions (and indicate stereo/regiochemistry where applicable).

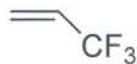
11)



Ph-OH

I-CH2Ph

12)

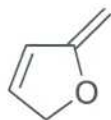
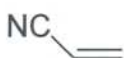


heat



(EXO)

13)

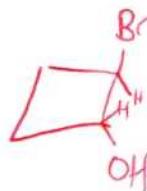
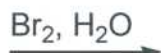


heat



No Reaction (s cis required)

14)



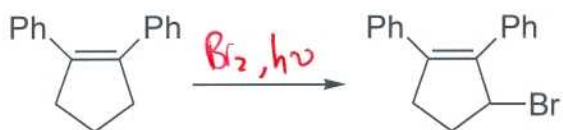
(anti addⁿ)

15)

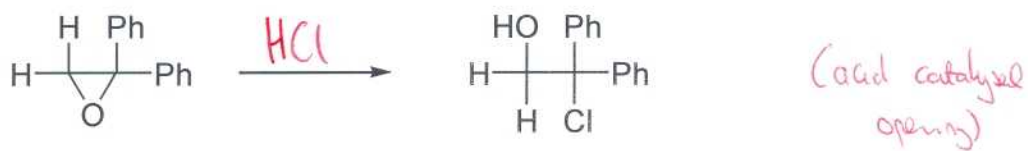


16-20) Give reagents and conditions for the following transformations.

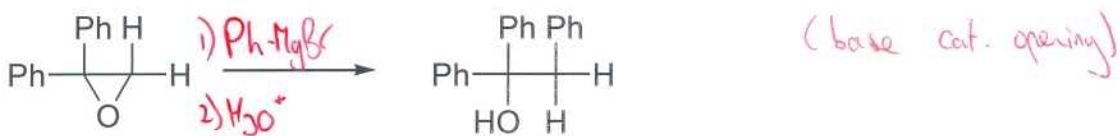
16)



17)



18)



19)

